

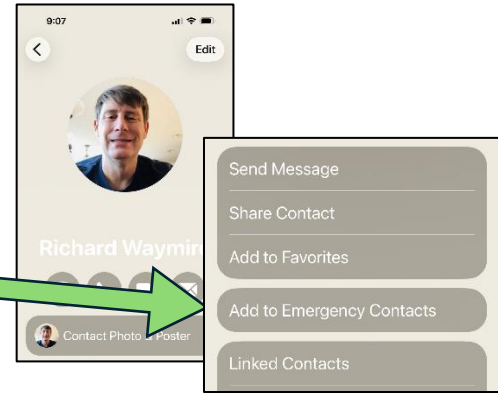
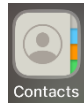
I.C.E.



What is I.C.E.? In Case of Emergency

iPhone Set up: Open your contacts

- Select person to be contacted
- Open their Contact Info:
 - Scroll down to bottom
 - Click **“Add to Emergency Contacts”**



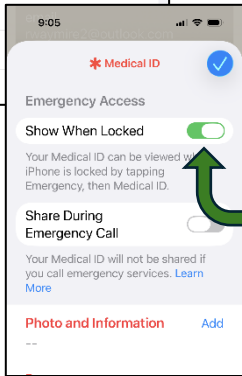
- Relationship screen opens: make a fitting selection (or you can make a custom label)



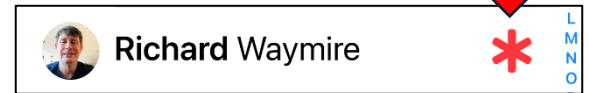
*Medical ID screen opens

(you may enter useful Medical Conditions, Allergies and Medications which would be helpful to EMS now or later)

- Scroll up to confirm **“Show When Locked”** is selected
- **NEW option** **“Share During Emergency Call”** might be a good idea...
 - Click the **blue check mark** button in upper right corner
- The **“Contact”** screen reappears...click the back button <



now my ICE person is indicated by the **red** asterisk



In Case Your Friend has an Emergency

Grab their phone

Press and hold the button on the right at the same time you press the top button on the left

EMS services use this too!



It will bring up this screen

Slide the ***Medical ID** button to the right

Same action can be used to make an emergency call