



# GRAPEVINE GARDEN CLUB

Established 1932

## *Through the Grapevine* September 2025

### Exploring the Grapevine Botanical Garden at Heritage Park

*Amanda Cooper, GIS Analyst*

*Karen Rice, Grapevine Garden Club*



The Grapevine Garden Club has been with us since 2000, so what could be new? *Lots!* A new garden app has been developed and implemented which includes an interactive map including plant identification, plant data, and hardscape locations identified. All you need to use this application is your phone! We will also explore garden ‘rooms’ with a purpose such as shade and pollinator pocket gardens. We will then invite all members to join us in the garden after the meeting to “explore” with the new app and visit the pocket gardens, accompanied by GBG Docents to help us in our exploration.

### **Tuesday, September 30, 2025**

Social and refreshments	9:30 AM
Program (above)	10:00 AM
Business Meeting	11:00 AM
Grapevine Convention Center at 1209 S. Main Street	



In this issue—	Page
<i>October Meeting Date Change</i>	1
President’s Message	2
Wall-Farrar Trail Tidy-up	3
FW Audubon Society Bird Walk	3
Eco-Talk—Roots and Remedies	3
New Member Welcome Event	3
Interpretive Bird Sign Unveiling	4
Open Gardens	5
Butterfly Flutterby	8
West Texas Street	8
Arbor Day Tree project	9
New Member Welcome Event	10
Seed and Plant Exchange	10
Gardeners on the Go—Mike’s Garden Center	10
Gardeners on the Go—Flower Ranch	11
Ways and Means Update	11
Ways and Means Craft Fair	12
Gardeners on the Go— Bowie House Follow-up	13



**The October General Meeting  
and Craft Fair  
will be on the third  
Tuesday in October—  
October 21, 2025.**

## President's Message

Look what I found on my front door yesterday when I went out to get the mail! According to i-Naturalist, it is a new variety of Sphinx Moth. Although it eats foliage as a caterpillar, as an adult it is a major pollinator in our environment.



As we begin to notice cooler autumn weather, we also may notice a few bright orange butterflies and anticipate the skies filling with migrating Monarchs who are making their annual trip to the mountains of south-central Mexico. We know that these intrepid travelers will need energy for their long trek. So, we enhance their environment by providing as many sources of nectar in our fall gardens as we can.

And speaking of moths and butterflies, our gardening year begins with one of our favorite projects—Butterfly Flutterby! The theme this year is *Wings of Change* and the celebration will take place on Saturday, October 18<sup>th</sup> in the Grapevine Botanical Garden. We will need a host of volunteers! Our September general meeting will be the first of two opportunities to get involved by signing up to serve. Or notify our BFFB Volunteer Coordinator, Cindy Miller (2025-26 yearbook roster page 57). As well as giving back to our community, it is great fun! So don't miss it!

This month we are also beginning to look at our own gardens to decide which plants need a boost. We collect seeds, dig and divide plants and make plans to nurture seedlings and young plants through the winter to be ready for our Plant Sale on April 11<sup>th</sup>, our major civic projects fundraiser.

Meanwhile—Happy Gardening as we *Enhance our Natural Environment!*

🌀Dinah Chancellor

### Metamorphosis: Ultimate *Wings of Change*



**Wall-Farrar**  
**Adopt-An-Area – Trail Tidy-Up**  
*Monday, September 29, 2025 – 9:00 AM*

Cooler temperatures are finally here. Come walk with us on the Wall-Farrar trails as we canvass for litter. This is the GGC Trail Tidy-up Project, a bi-monthly Adopt-An-Area community service. Location is the Wall-Farrar Nature Trail in Grapevine. Parking is allowed courtesy of Church at the Cross at 3000 William D Tate Avenue, Grapevine, TX 76051.

*Hope to see you on the 29th!*

☸**Karen Rice, Robin Pond, Coordinators**

**Fort Worth Audubon Society (FWAS)**  
**Fall Bird Walk –**  
**Parr Park in Grapevine**  
*Sunday, September 14<sup>th</sup> – 9:00 AM*

Join GGC member, Karen Rice and other FWAS members on a bird walk. We will meet in the parking lot by the Rotary Pavilion. Beginning birders are always welcome. For more information, contact Karen Rice (yearbook p R71)

**ECO Talks**  
**Roots and Remedies**

You're Invited! Dive into the fascinating world of local trees at this month's ECO Talk:

***Roots and Remedies:***  
***Nurturing our Local Trees.***



Discover essential tips on tree care, from planting and pruning to identifying common diseases and implementing effective treatments. Presentation will be given by **Michael Smith, Arborist, of Barlett Tree Service.**

**Date:** Wednesday, October 1  
**Time:** 7:00 - 8:00 PM  
**Location:** The Vine 225 W. Worth St  
**Register:** [KeepGrapevineBeautiful.org/trees](https://KeepGrapevineBeautiful.org/trees)



**New Member Welcome Event**  
**CALLING ALL NEW MEMBERS!**



If you joined the Grapevine Garden Club after September 2024, then we would like to meet you at our New Member Welcome Event!

**Date:** Thursday, October 23  
**Where:** Grapevine Botanical Garden Bessie Mitchell House  
**Time:** 9:30 AM Social Time  
10:00 AM – Noon Presentations about GGC and its activities

Don't miss this wonderful opportunity to meet other new members as well as several of our officers and committee chairs to learn about many great involvement opportunities! You will be receiving an invitation via email in the next few weeks. **Please RSVP** and plan to attend.

**We are looking forward to seeing you!**

☸**Kathryn Armstrong and Liz Lovett**  
**New Member Welcome Event Co-Chairs**



# Interpretive Bird Signs Unveiling – October 1, 2025

We are thrilled to announce the unveiling of three new interpretive bird signs in Grapevine's parks—an inspiring collaboration between the Grapevine Garden Club and the Grapevine Parks Department. Last year, a dedicated committee of GGC members partnered with Parks staff to design signs that celebrate the rich birdlife found in our local green spaces. These signs were made possible through a combination of remaining funds from our 90th anniversary celebration, generous donations in honor of Ray Chancellor, and a grant from the Audubon Society.

## Behind the Scenes

Morgan Denny, Lake Parks Manager, thoughtfully selected the sign locations. GGC committee members Robin Pond, Karen Stephenson, Ella Barber, Karen Rice, and Linda Robbins curated the bird selections, crafted the narratives, and drafted the layouts. Claire Gilbert, Marketing Manager for Parks, transformed these drafts into production-ready designs. Once completed, Parks employees installed sturdy cement bases and mounted the signs in their new homes.

## Sign Locations

- **Horseshoe Trail off Snakey Lane** – near the bench overlooking the lake
- **Acorn Woods** – by the bridge
- **C. Shane Wilbanks Trail** – at the trailhead

## ☀️ Join Us for the Unveiling

We invite you to celebrate with us at the official unveiling on **Wednesday, October 1, 2025** at **10:00 AM**, by the sign on **C. Shane Wilbanks Trail**, just off **Darrin G. Medlin Trail** (across from **Trawick Pavilion**, where we host our spring luncheon).

Come enjoy the beauty of nature, learn about our local birds, and honor the community spirit that brought these signs to life. We hope to see you there!



# Grapevine Garden Club – Open Gardens

September 23 AND September 24, 2025  
BOTH days are from 9:00 AM – NOON

## Come one come all to the 2025 GGC Open Garden FALL tour

Each house has something special to enjoy...from beloved plants and turtles to an extensive plumeria collection to lovingly created English gardens and herb/veggie gardens carefully built into a stunning landscape...there is something for everyone! This tour presents an interesting way to see how the gardens at each house have matured and filled in as the summer has progressed into fall.

**NOTE!!! Given the driving times between houses,  
this Fall tour takes place over TWO DAYS!**



**Tracy and Kim are hosting on TUESDAY, SEPTEMBER 23**

**Uma, Tina and Catriona are hosting on WEDNESDAY, SEPTEMBER 24!**

**We are hopeful that all of you can join us on both days!**



### Notes from our garden hosts for September 23<sup>rd</sup>

**Tracy Waymire**

**Please check Argyle address in GGC Yearbook.**

**\*Note! Tracy says that the drive time to the monthly GGC meetings is only 20-30 minutes so this is an easy drive for everyone!**

*This is my first Texas garden (established February 2023) but I lived in a similar zone in the Seattle area. The high and low temperatures are similar there, but we only got 3-4 days in the hundreds all summer! My Texas garden is still a work in progress, especially since my back surgery last November. I do have a couple of trouble areas and would love any input/suggestions from fellow GGC members!*

*My front yard is primarily reds and yellows that I added to the builder plants. The backyard focuses on pinks and purples.*

**Kim Jamieson**

**Please check Southlake address in GGC Yearbook.**

*My husband and I bought this property in October of 2011. It was an acre of weeds, It had been foreclosed, rented, and foreclosed again all within 10 years. To say that the yard was neglected is an understatement! There were no garden beds, no plants, no grass, no ornamental anything (except the holly trees in front, the evergreen bush to the left of the front door, the boxwood in the back and 3 of the 11 crape myrtles.) Since then, all garden beds, plants and trees have been personally installed, and the grass has been slowly brought back to an almost full carpet.*

*As I built and planted, I came to learn that gardening in the Cross Timbers Region is a challenge. In our neighborhood, our "soil" is just a thin layer of sand on top of sticky red clay. This added another layer of challenge to what I was trying to do! But where there is a will there is a way! I created the earlier beds at grass level. These always struggle. So the later beds have been raised and do better. I amend the soil every year with more compost and more worm castings and feel that slowly I'm starting to turn the tables toward actual soil.*

*My irrigation system is a modge podge of modified heads that work most of the time. This summer found a few areas that were not working properly which resulted in a thinner than normal flower crop. Overall my gardens start blooming in January (Lentin roses) and keep blooming with bulbs, iris, and perennials through the first freeze and sometime beyond. I have very few annuals, though I do love my zinnias so they are everywhere!*

*I do my very best to plant for the pollinators and have host plants for Monarchs, Gulf Fritillaries, Swallowtails as well as a good selection of nectar plants that bloom from spring through late fall. There is a small but mighty herb garden in the pool area and a tiny veggie tower that's fun to play around with.*

*I have a very very VERY small pond, a super cool rock fountain in the back yard and also a brand newly constructed "rock cairn" fountain in the front yard that my husband just made for me with rocks that I collected on the Llano river plus a few other bird baths and fountains. I do love my water features!*

*Oh, and then there are the PLUMERIAS! I started my collection in 2016 with one plant given to me as a cutting. 2021 found me adding exponentially every year to date so that now I'm up to roughly 380 individual plumerias! Almost all are named varieties and there are only a small handful of duplicates. I adore them and can easily talk for hours about them. If you have questions, please ask!*

*I have more plans to expand beds specifically for the plumeria since they are too crowded this year. I'm looking forward to giving them room to stretch out more next year! The plumeria have filled out beautifully and are still putting on inflos (flowers). Plus, I have a few newly developing seed pods along with a few open ones to show you how they look.*

*I hope you are able to join me in a stroll through my happy green acre!*



### **Notes from our garden hosts for September 24<sup>th</sup>**

**Catriona Noble**

**Please check Grapevine address in GGC Yearbook.**

*Where it all started: We purchased our house in 1985. It was a new house and the landscaping consisted of 3 mature poplar trees in the front and 1 medium tree in the back, plus weeds! We were pretty green gardeners at the time so we began by making a typical garden around the outskirts of the area leaving a large lawn area so we could play various games with the girls. The first item we planted, that actually lived was lirioppe, mostly everything else died. My mother bought us two maples and a magnolia as a housewarming gift, which we planted too close to the house. We eventually moved them and fortunately they survived. Years later, the maples died which changed these areas of shade to sun. The medium tree died, and I replaced it with a couple of crape myrtles, which are still growing to fill in the gap it left to give us afternoon shade. We have been fortunate, maybe because this area was farmland, in that the soil was reasonably good from the beginning.*

*Overall, most of my gardening is done in the back area, while the front is pretty basic. A few challenges: We had an area directly by the front door which caused us problems with sun and a little clay soil. We tried so many things; stones, pots, trees, but finally settled on an open garden with plants and bushes. Over the past few years, I have been adding more evergreen bushes to add color during dreary winters. In addition, within a few years we discovered we had a drainage problem, with water coming into the house during storms. We added French drains then buried the guttering then more French drains, then a river rock area for the water to run off. It's still a work in progress as unfortunately after the most recent storm we discovered there is still water coming in. (Talk to me if you are interested in knowing more).*



*What you will see now: Once the basic garden was finished, I set my goals.*

- 1- Be able to pick flowers, leaves/berries to bring into the house twelve months of the year.*
- 2- An English perennial garden.*
- 3- Look out of any window and see a picture garden view.*

*Later two separate gardens were added, one with a seating area which makes three seating areas, where I like to invite friends over to have a cup of tea. I consider gardens as an additional room to the house. I spend a lot of time outside, especially when it rains.*

*I invite you to come into my garden and enjoy a private area of relaxation*



**Uma Lal**

**Please check Colleyville address in GGC Yearbook.**

*My husband, Vinit, and I built our home in 2009, and since then, our garden—like many others—has been continually evolving with the seasons and the changing environment. Over the past seven years, I've had the pleasure of working with Toni Moorehead making ongoing enhancements. The result is a beautiful blend of Toni's thoughtful design and many of my personal favorites.*

*Our front garden features a rich tapestry of Japanese maples, abelias, sunshine ligustrum, leopard plants, bear's breeches, hydrangeas, and a variety of perennials. I've also collected several unique jasmine varieties during my travels, which now thrive throughout the yard.*

*The backyard includes a large fishpond surrounded by vibrant cannas. On the south side, you'll find an expansive vegetable garden bordered by fruit trees. Near the house is a cozy kitchen herb garden, perfect for everyday cooking. Most recently, we added a butterfly garden in the back to attract pollinators and bring even more life to the space.*

*I'd be delighted to have you wander through and enjoy the garden that we've nurtured over the years*

**Tina Bruns**

**Please check North Richland Hills address in GGC Yearbook.**

**(on the Colleyville/Keller border between Precinct Line and Davis)**

*After living in Grapevine for 20 years, we moved here seven years ago and found gardening to be not quite as hospitable. I think we're on the edge of the prairie! Still, it is our joy.*

**PROJECTS:** *We eliminated 30+ bushes. Beds have been created and expanded, including a dry bed for drainage. Some hardscaping, a sitting area and privacy trees have been added.*

**LANDSCAPE:** *The 100+ varieties of plants we've nurtured are heirloom plants from our previous home, snippets from friends, GGC plant sale, and area nurseries. If you see repetition, I could say it's to create a unified look on our small lot, but it's really because we can't bear to throw away a plant.*

**TURTLES:** *Presently, 11 box turtles and 1 Russian tortoise live in "free range harmony" in the backyard existing on whatever they can find, supplemented with canned dog food and strawberries that they have trained us to put it out when they come to our back door. PLEASE HELP US BY OPENING and CLOSING THE GATES QUICKLY and WATCHING THE GROUND. THEY ARE FAST, CAMOUFLAGED and SNEAKY!*

**CHALLENGES:** *Poor soil, moles, webbed root system of the large maple and too many tiny harmless ants. We use no pesticides due to turtles.*

**FUTURE GOALS:** *Reduce turf, continue to focus on seasonal color and keep what we have under control*

# Get Ready for Butterfly Flutterby (BFFB)



## THEME: WINGS OF CHANGE

Saturday, October 18<sup>th</sup>

We have EXCEPTIONAL leaders planning each BFFB area which GGC is sponsoring:

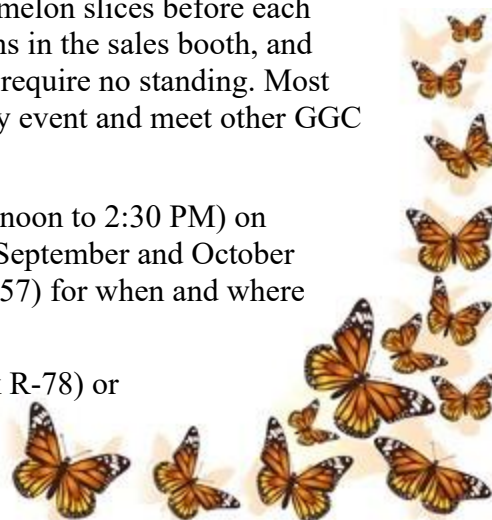
Ambassadors - **Cindy Miller**, Arts and Crafts - **Ella Barber**, Butterfly Treasures (the GGC Sales booth) - **Gloria Land**, Science Station - **Dinah Chancellor** and Student Art Contest - **Edie Miller**.

Now we need team volunteers! *If you volunteered for BFFB last year, the leaders will be contacting you. But don't hesitate to contact them first.*

Before the event, we need help to pick up student artwork and display artwork on the day of the festival. We have fun "dress-up" jobs and lots of opportunities to help kids make fun crafts and look at butterfly wings under microscopes. We need volunteers to distribute watermelon slices before each Monarch release, help to sell very cute, kid friendly butterfly items in the sales booth, and help to hand out maps and check in BFFB volunteers. Some jobs require no standing. Most jobs are hands on. What a great way to participate in a community event and meet other GGC members!

Choose a time that works for your schedule (9:30 AM to noon or noon to 2:30 PM) on Saturday, October 18<sup>th</sup>. There will be a sign-up table at the GGC September and October general meetings. You may also email Cindy Miller (yearbook R-57) for when and where you want to be a part of the fun.

Questions? Contact BFFB Coordinator **Susan Stanek** (yearbook R-78) or Co-Coordinator **Linda Krimm** (yearbook R-46).



## West Texas Street Workday Thursday, October 28<sup>th</sup> at 9:00 AM 315 West Texas Street, Grapevine



Hi everyone! It's Irene and Robin here, and we want to let you know that it is Fall pansy planting time at West Texas Street!

Grab your tools, put on your grubbies and join us! We will be cleaning up flower beds, planting pansies, and adding mulch where needed. You will have a great time meeting new people and learning new ideas!

And for those who work up an appetite or just want to socialize, we all meet up afterward at Jake's on Main Street in Grapevine.

And they don't mind if we are grubby!

If you have any questions, please contact Irene or Robin. We are in the yearbook.

We look forward to seeing you!

**Irene Binyon and Robin Pond**  
**West Texas Street Co-Chairs**



# Arbor Day Tree Project

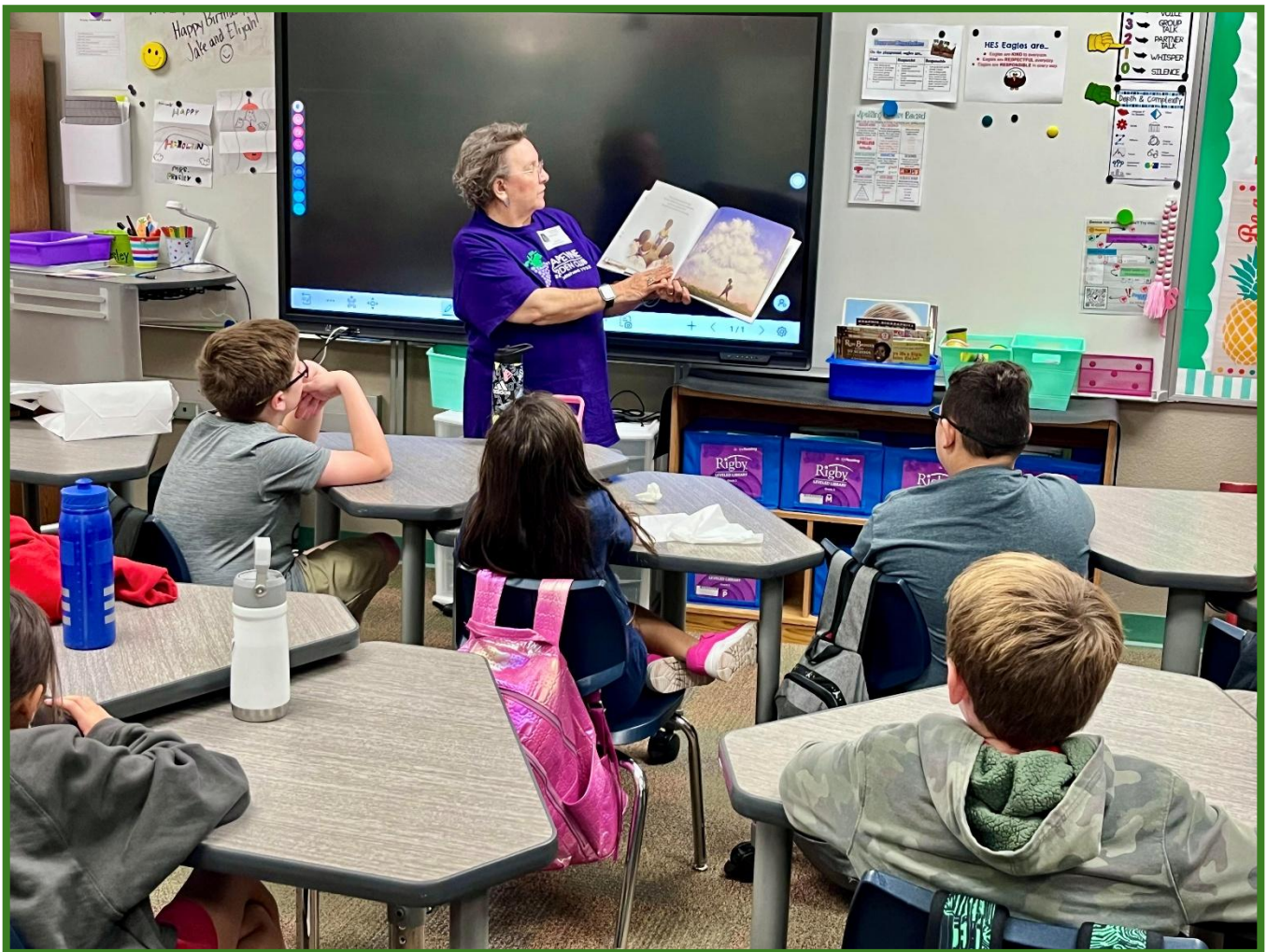
## CALLING ALL READERS!!!

Hello to Everyone!! I hope everyone has had a pleasant summer! I know I did. However, I am eagerly awaiting fall! I wanted to put out a request to ask if you would like to be a reader this year at one or several schools for the Arbor Day Tree Project. Volunteers go into 3<sup>rd</sup> grade classes in Grapevine Colleyville ISD to talk about the importance of trees and then read to the children. We have a new book that imparts good information to the third graders about trees.

This year we will be reading to almost all classes on Friday, October 31<sup>st</sup>. We do have three schools that have asked that the readings be done on Thursday, October 30th. Time allotments are 20-30 minutes per reading.

If you would like to be included in this important—and fun—event, please notify Emily or Judy McDoniel (yearbook roster page 55).

☸Emily and Judy McDoniel  
Arbor Day Tree Project Co-Chairs



Arbor Day Tree Project, 2024

**Please welcome our newest members.**

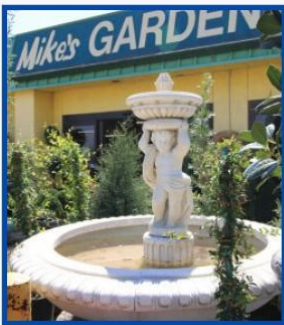
*Alex Afshin  
Julie Hill  
Kristin Kauffmann  
Kay Miles*

*Brad Milyo  
Lori Petering  
Nicole Rister  
Kristina Russell*

## **Seed and Plant Exchange**

Do you have plants in your garden that have gone to seed? Please bring the seeds to the next general meeting. Place them in an envelope and write the name of the plant and whether it likes sun or shade. Does it flower in the spring or fall? Anything else you would like to share about your plant?

🌀 **Judy McDoniel**  
**Seed and Plant Exchange Chair**



## **GARDENERS ON THE GO**

*Save The Date*

## **Mike's Garden Center**

**Thursday - 10:30 a.m.**

**October 2, 2025**

**555 E. Hwy 114, Southlake, TX**



Join us for a tour of a fabulous 5 acre garden center with Fountains, Plants, Pots, Indoor and Outdoor Home decor, a huge collection of trees and the largest collection of water fountains we have seen anywhere.

**Mike's is giving a generous 25% discount.**



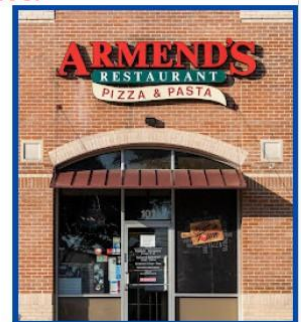
**Lunch - Noonish**

**Armend's - 2315 E. Southlake Blvd**

**Meet Up: Grapevine Botanical Garden**

**10:00 a.m. for Car Pooling**

**Wear your Purple Shirts!**







## GARDENERS ON THE GO

*Save The Date*

### The Flower Ranch

**Friday - 10:30 a.m.**

October 24, 2025  
901 S. Pearson - Keller, TX



Join us for a tour of The Flower Ranch where they grow  
and produce annuals, bedding plants, ground covers,  
ferns, baskets and more.

**Get a 10% discount for the day!**



Lunch - Noonish  
TBA

Meet Up: Grapevine Botanical Garden  
**10:00 a.m. for Car Pooling**  
**Wear your Purple Shirts!**



### Ways & Means Update

Last year was a very good year for Ways & Means. We sold over \$4500 in gardening supplies and gifts at our meetings, with all the profits going to support the GGC's programs and events. We'll be back in our familiar spot in the lobby of the Convention Center at our September meeting, and we've added some new items to our Grapevine Garden Club offerings! There's a handsome and sturdy ball cap and a distinctive GGC tote bag, among other items for sale. Check out the picture.

☞ **Alexandra Evans**  
**Ways and Means**







## The Craft Fair is Coming!

We are pleased to announce that the October Craft Fair is just around the corner! It's not too late to participate as a vendor! You can show your wares on a six-foot table for a fee of just \$15. The Fair is held before the general meeting, from 9:00 to 10:00 AM, and opens again after the meeting if we have time. Judy McDoniel shared a photo of the quilting she is bringing. Aren't these lovely?

☪ Alexandra Evans  
Ways and Means



## GARDENERS ON THE GO

*Follow Up to*

## Gallery at Bowie House

**Tuesday - 10:00 a.m.**

**August 12, 2025**

**3700 Camp Bowie Blvd., Ft. Worth, TX**



Eleven members enjoyed the beautiful Art of the Bowie House Gallery. Emma, our tour guide, was fun and informative. Following a fabulous tour, we enjoyed lunch at Rex's. A good time was had by all, thanks for joining us for another great Gardeners on the Go event!



## GGC Scholarship News

The GGC Scholarship committee is pleased to announce that we will be able to award scholarships to eligible applicants in the amount of up to \$4,000 per recipient in the Spring of 2026 for the 2026-2027 academic year. Communications have gone to the Grapevine Colleyville ISD high schools as well as to Grapevine Faith Christian School.

These generous amounts are a result of the success of the GGC 2025 Spring Plant Sale and other Civic fundraisers. We want to say THANK YOU to all the volunteers who provided their time and talent to the Spring Plant Sale and other endeavors that made this possible as well as many thanks to the Scholarship Committee.



**New members** please take note: Scholarships may be awarded to any of the following individuals enrolled in college with a declared major in horticulture-related subjects:

- A graduating senior residing in the city limits of Grapevine or enrolled in the Grapevine Colleyville Independent School District
- A graduating senior who is the child or grandchild of any Grapevine Garden Club member
- A scholarship recipient from the previous year
- A college student with a permanent residence in Grapevine or within the Grapevine Colleyville Independent School District

Please communicate this scholarship availability to anyone you know who might meet our criteria. Details can be found in the Standing Rules on the GGC website: [grapevinegardenclub.org](http://grapevinegardenclub.org) under the “Member Access” tab. Applications can be found on the GGC website under the “About” tab.

**Applications must be received by March 1, 2026.**

If you have any questions, please contact Kathryn or Liz.  
(Contact information in the yearbook)

☯Kathryn Armstrong  
☯Liz Lovett  
Scholarship Co-Chairs