



THROUGH THE GRAPEVINE



TUESDAY, FEBRUARY 23, 2010

Stacy's Furniture & Accessories

Community Room, 3rd Floor

1900 South Main, Grapevine

Social 9:30 A.M.

Meeting and Program 10:00 A.M.

We thank our members for continuing to carpool and park in the outer slots to allow Stacy's customers to park near the store entrance.

THANK YOU TO OUR HOSTESSES: Val Reed (chair), Margaret Brinson, Paula Wilbanks, Barbara Thompson, Eloise Beller, Pat Mingus, Barb Munn, and Therrie Mazur.

FEBRUARY PROGRAM "Horticultural Developments and New Garden Color Schemes"

Janet Curry



Janet Curry, horticulturalist with Ball Seed Company (a principal subsidiary of Ball Horticultural Company), will discuss new horticultural products being developed, as well as new trends in garden color schemes. Janet will expand on the vision of Anna Ball (President and CEO, Ball Horticultural Corp). On the company's website (www.ballhort.com), Anna Ball says she is not worried about competition from other horticultural companies as much as she is concerned about other consumer amusements. She states, "What worries me is competing with video phones. We have to keep the eye candy coming. We have to keep producing plants that are unavoidably attractive." Come with lots of questions, and enjoy.

FEBRUARY 2010

PRESIDENT'S NOTE

So you think your garden is sleeping? Think again! As I looked outside at my garden the other day, it was cold and cloudy – a really dreary day - I truly thought my garden was asleep for the winter. Resting, getting ready for the spring.

A few days later I walked around the garden, trying to decide what winter project I should tackle first, and then I saw that my winter honeysuckle was blooming. Just seeing those little white blooms made me think I had better check on a few other things. Believe it or not, I found my lenten rose in bloom, as well as my Texas scarlet quince, leatherleaf mahonia, and a little rosemary that I brought home from the boat last fall when it was in full bloom. Not only do I have things in bloom, but I have daffodils, paperwhites and larkspur making a grand display of green, green, green.

The other thing I thought was interesting is that most of the plants blooming in January and February are shade-loving plants, and the ones that are just starting to emerge to bloom this spring are sun-loving plants.

This is a great time of year to start planning your garden, making notes about what did well and what didn't. February is the month to prune your roses and a great time to start planning what you need to divide and pot up for our garden club plant sale. Do you have a few "holes" in your garden? Do you have room for some new plants? If so, you had better start making a shopping list for the plant sale.

Landscaping is fun, rewarding and a great way to enjoy the fresh air and soak up some Vitamin D. So when it stops raining, get out there and start digging in the dirt!

Suzi Guckel
President

Suzi's Winter Garden

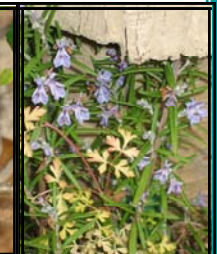
Lenten Rose

Leatherleaf Mahonia

Winter Honeysuckle

Texas Scarlet Quince

Rosemary



WELCOME TO OUR NEW MEMBERS WHO JOINED IN JANUARY 2010

Denise Hines - Southlake
Laura Keathley - Flower Mound
Debbie Miranda - Grapevine
Susan Pittman - Grapevine

WWW.GRAPEVINEGARDENCLUB.COM

FEBRUARY 2010

GRAPEVINE GARDEN CLUB OFFICERS FOR 2010-2011

Congratulations!



The Nominating Committee for 2010/2011 Officers was comprised of Elayne Vick, Kathy Dohrer, Sheri Jones, Karen Rice and myself. Our committee was so pleased to have been able to offer our membership a potential slate of officers that included so many members who had not previously served on the board.

It is with great pride that I present the following newly elected Grapevine Garden Club Officers for the term of June 2010 through May 2011:

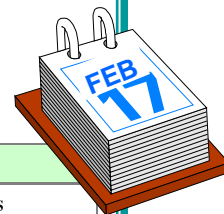
Sarah Erickson -President	Elayne Vick - 3rd VP Communications
Joan Kowalski - 1st VP Programs (Kathy Clark will assist Joan.)	Barbara Oldani - Recording Secretary
Harriet Perrello - 2nd VP Membership (Chris George will assist Harriet.)	Angela Ozymy - Corresponding Secretary
	Pam Braak - Treasurer
	Gloria Land - Publicity Coordinator

We offer our congratulations to each and every one on this list. It is always an honor to be a member of our board. We also want to thank each of these women for stepping forward and offering their time and talents for the benefit of our Club.

Installation of these officers will be held during our Spring Luncheon on May 11th.

- René Herndon, Nominating Committee Chair

CALENDAR OF EVENTS



Date	Event	Location
February 13	Master Composter Certification Course	Texas Discovery Gardens, Dallas
February 16	GGC West Texas St work date	W. Texas St., Grapevine
February 17	Ft Worth Garden Club Council	Ft Worth Botanical Garden
February 20	Garden Walk - Roses	Texas Discovery Gardens, Dallas
February 26 - 28	All Texas Garden Show	Arlington Convention Center
February 23	GGC General Meeting	Stacy's Furniture, Grapevine
February 27 - April 2	Butterflies in the Garden	Ft Worth Botanic Garden
March 20	Garden Walk - Earthworm Extravaganza	Texas Discovery Gardens, Dallas
March 23	GGC General Meeting	Stacy's Furniture, Grapevine
April 10	Spring Plant Sale	Ft Worth Botanic Garden
April 17 - 18	GGC Annual Plant Sale	Gazebo on Main St., Grapevine
April 17 - 18	Ft Worth Iris Society Flower Show	Ft Worth Botanic Garden
April 18	Molly Hollar Wildscape Native Plant Sale	Randol Mill Park Greenhouse, Arlington
April 24 - 25	Flowercade	Ft Worth Botanic Garden
April 24 - 25	Spring Festival in the Japanese Garden	Ft Worth Botanic Garden
April 27	GGC General Meeting (9:30 a.m. start)	Stacy's Furniture, Grapevine
May 1 - 2	African Violet Show and Sale	Ft Worth Botanic Garden
May 11	GGC Spring Luncheon	To be determined
May 15	Herb Society Festival	Ft Worth Botanic Garden
May 15	Butterfly Plant Sale	Discovery Garden, Dallas
May 29	North Texas Daylily Society Show	Ft Worth Botanic Garden

WWW.GRAPEVINEGARDENCLUB.COM





FEBRUARY 2010

JOIN "THE GRANDE TOUR"

Each year members of the Grapevine Garden club participate in Flowercade, a garden show sponsored by the Ft. Worth Garden Club Council. The theme of Flowercade this year is "The Grande Tour." The dates are April 23 to 25.

Flowercade has two sections, horticultural and design. Our club has always had good participation in the horticultural section. Members enter specimens of flowers, plants, or potted plants for judging. Winners are awarded ribbons, and our club has received several "Best of Show" awards. There will be more about horticultural entries in upcoming newsletters.

The design section is more challenging, but great fun. The categories consist of large floral designs, table settings, and artistic crafts. Some of our members are quite experienced in floral design. You are urged to participate in Flowercade this year.

At our January meeting, Rachel Clark showed an example of table design. This consists of two place settings at a small table (card table size). It involves plates, glasses/cups, napkins/tablecloth/placemats, and a floral centerpiece that carries out the theme of the design. Flatware is not included.

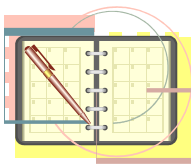
The artistic design sections are: topiaries, "Treasures of India," jewelry designs made of plant material, and decorated purses. There will be more information about these design sections at the February garden club meeting and in the newsletter.



Table setting and photo by Rachel Clark.

If floral design interests you, please plan to attend the Ft. Worth Garden Club Council meeting at the Ft. Worth Botanic Garden on February 17th at 9:30 A.M. Examples of the design categories will be displayed. Ann Parker, National Garden Club judge and floral designer, will present the program and demonstrate all design categories.

If you are interested in entering a design or have questions, please contact Sarah Erickson. (Yearbook page A-15)



MARK YOUR CALENDARS

The annual Grapevine Garden Club Spring Luncheon and installation of officers will be held on **Tuesday, May 11**. Details, including location, will be revealed next month. Mark your calendars and join us to celebrate the conclusion of another successful year.

WWW.GRAPEVINEGARDENCLUB.COM



FEBRUARY 2010

CHILDREN'S PROGRAM

The next children's program at the Grapevine Botanical Gardens is "Bloomin' Branches" on February 16, 4:00 to 4:45 P.M. Designed for children 3 to 6 years old, the program includes a fun horticultural activity and story. The kiddos have fun and learn about nature, and so does each parent! Registration is through the Grapevine Parks and Recreation website, with a charge of \$5 per child. GBG docents are encouraged to come to help corral/shepherd/teach/read and maybe learn something, too! If you're available to help on Feb. 16, contact Joyce Quam (Yearbook page A-44).



THE PLANT SALE IS SOON (YIKES!) AND WE NEED YOUR HELP!

The annual Grapevine Garden Club plant sale is coming up soon! On Friday, April 16, GGC members will begin to set up for our annual sale, plus shop for ourselves after all is ready. Saturday, April 17 is the official sale day for the entire community. The plant sale will again be located at the gazebo area in downtown Grapevine. Lots of volunteers are needed to make this a successful event. Well before this big event we need heirloom plant providers and diggers. Please contact Karen Rice or Val Reed (Yearbook page A-45) to volunteer.



Pre-Plant Sale participation

Heirloom plant providers dig and pot plants from their own gardens, place an identification stick (mini blind section) in each, and bring all to the Grapevine tree farm. Ask Karen Rice or Val Reed for pots and mini blind sections.

Heirloom plant diggers will come to your home to help you pot your plants for the plant sale. You need only ask for their help.

To volunteer to work on April 16 or 17, please contact Joyce Quam (Yearbook page 44) to sign up. We need everyone in the club to help in at least one way! This is our major fund raising activity for scholarships and civic endeavors.

To help you decide which tasks you'd like to help with, a brief description of the volunteer duties at the plant sale is provided next. Each committee chair will provide more complete instructions as the sale date nears.

Friday volunteer tasks

Set up gazebo area

Set up volunteers price and arrange plants as directed by Val Reed and/or Karen Rice. Volunteers transfer plants from the tree farm to the downtown gazebo, set up tables where the plants will be displayed, and position plant signs. When nursery delivery trucks arrive, volunteers will unload the trucks and place flats of plants where instructed.

Clean up gazebo area

After the members-only sale, volunteers help organize the gazebo area and tidy it for the public plant sale on Saturday.

(Continued)

FEBRUARY 2010

VOLUNTEER POSITIONS FOR THE PLANT SALE; cont.

Saturday volunteer tasks

Cashier assistants

Plants are priced with colored plastic knives. Cashier assistants remove knives from customers' plants and count the number of pots being purchased. They fill out a purchase sheet with total number of items for each category, as well as any specially priced items. Assistants collect no money; they give the purchase sheet to the cashier who totals the purchase and collects payment from the customer.

Cashiers

Cashiers use calculators with paper tapes to total each order and take payment from the customers. When customers have too many plants to carry, they can park their choices in the Holding Area and continue to shop. When they are done, they return to the Holding Area to get purchase sheets for the cashier, who takes payments and marks sheet PAID. Customers take the paid receipt back to Holding Area to pick up their purchases.

Sales/Plant consultants

Sales volunteers help customers at the sale and answer questions. Complete lists of plants for sale are handed out in advance so volunteers can familiarize themselves with the plants and their requirements. Volunteers also consolidate plants, remove empty trays, and reorganize areas as plants are sold.

Holding Area. Provides a place for customers to set aside plants they want to buy and continue to shop.

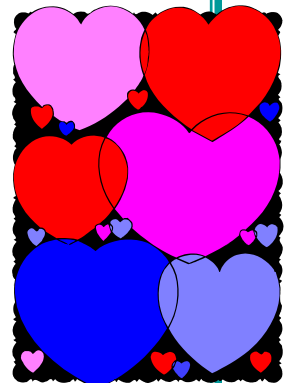
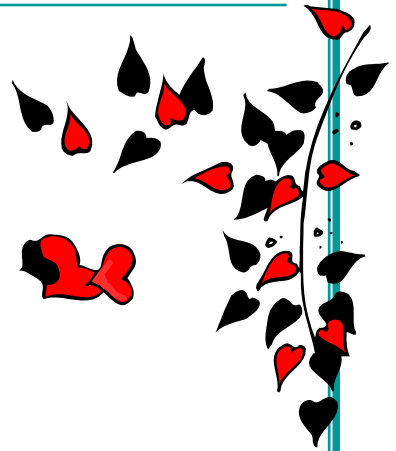
Holding Area receiving: A grid pattern of numbered squares is laid out in the Holding Area. Volunteers place customers' plants in squares, place one card with the plants, and give matching cards to the customers.

Holding Area pickup: When customers are ready to check out, volunteers gather their plants and remove price knives, counting the knives and matching the number of pots to that total. Volunteers then fill out price sheets with total number of items for each category so that customers can take their purchase sheets to the cashier and pay for their plants. Cashiers stamp PAID on the purchase sheets, and customers return to the Holding Area, showing the PAID purchase sheets and collect their plants.

Clean up gazebo area

Volunteers collect trash and clean area after the sale, wiping off, folding up, and placing tables in truck for pickup by the city. If necessary, volunteers help move unsold plants back to the tree farm. City employees will help with table loading.

You may not believe it after reading all this, but the plant sale is lots of fun, and we have the best time! (unless it rains of course, but let's not go there.....)





FEBRUARY 2010 REDBUD PROGRAM



We are so excited to present our Redbud Program to our chosen elementary schools. Each year we choose third grade classes at local schools to participate in our presentation. We talk about the importance of trees, demonstrate how to plant a tree, and read a book to the class. The class receives the book as our gift, and all children receive their very own redbud to plant. The kids love it! The City of Grapevine provides all the materials.

We will be presenting to Heritage Elementary School and Holy Trinity Catholic School this year. We have plenty of volunteers to help bag the trees. Thank you, wonderful volunteers. We do need, however, volunteers to present to our classes. The presentation date is March 5. Times are 9:45-10:45 a.m. at Heritage and 9:45-10:45 A.M. at Holy Trinity. All the supplies and presentation materials will be provided. We just need you! Please contact Laura Ball (Yearbook page A-1) to volunteer as a presenter.

Introducing an ongoing series

LOOKING BACK

When the Grapevine Garden Club celebrated its 75th anniversary in 2007, Joetta King proposed that the club create a memorial book containing articles written by current and past members, particularly past presidents. Everyone was encouraged to contribute. Valerie Reed suggested the title, ***Reflecting on 75 Years of Dedicated Gardeners***, and Joetta collected as many photos as she could find of club events, tours and other activities, spending hours scanning the photos printed on paper. A CD with a slide show of more than an hour's worth of photos accompanies the book, which resides today in the Grapevine Public Library behind glass doors in the Grapevine Area History Room. The library has given us space there for all club archives. The beautiful and unusual cover of the Anniversary Book was designed by Ileana Craft. (A photo of this book cover appeared in the November 2009 newsletter.)



Iris germanica x 'Charleston'
in Sylvan Sigler's garden.
Photo by Elayne Vick

Club members were asked to write about the many milestones the club had celebrated up to that time, in order to honor those events with an historical write-up. Several members were moved to write about other pertinent topics such as plants and trees, club awards, club projects, and horticultural education. One member wrote a tribute to her mother's garden, and we present it on the next page as our first republished article from the Anniversary Book. You'll see more of these, one per issue, when space allows.

Julie Florence, the author of the article presented on the next page, was a valued club member who passed away in July 2008. A special section of the Grapevine Botanical Gardens is dedicated to her.

Mother's Iris Bed

by Julie Florence

It's the middle fifties in Grapevine which is a small farming community in North Central Texas. There is not a large, busy international airport, not a single world class hotel, and not a traffic jam in any direction. There is, however, an air of excitement among the members of the Grapevine Garden Club. It is time for the Annual Spring Flower Show held in the First Baptist Church, located at Texas and Smith Streets, a couple of blocks east of Main Street.

Many of the ladies of my childhood are active in this busy, involved Garden Club. The City of Grapevine itself is the recipient of the fruits of The Club's labors. Beautification has always been one of the benchmarks for this group of hard-working members.

My mother, Betty Yancey, was not a Master Gardener, nor a volunteer gardener, nor was she one of the more knowledgeable gardeners in the club. However, she did have one exceptionally large bed of iris on the south side of our home at 501 Smith St. which was located two blocks south of the old First Baptist Church and one block east of Main Street. The iris bed was anchored by two enormous Bois d'Arcy trees, one at the east end and the other at the west end.

Each spring, as faithfully as the sun rose and set each day, a riot of color would explode almost magically in time for the Grapevine Garden Club's annual flower show. First to appear were the white iris, then the purples, and finally colors I could not even imagine or describe. Pink, yellow, pale blue, two-toned brown, amber, darker blue and lavender. The colors seemed to go on forever. And to my child's eyes, the colors seemed to have been painted and put there by God Himself!

I don't recall Mother ever telling me which bloom she would enter in the Flower Show. My sense of it is that whichever bloom was the biggest and prettiest the day of the competition would be the one she chose. She would cut the bloom early in the morning, place the stem in a glass of tepid water and allow water to be soaked up into the bloom. Then she would put the bloom in a container of some kind and walk it down to the church for the judges to examine, along with the rest of the iris entrants.

The judging would take place over the course of the day, and when I returned from school, a winner would have been announced. I would walk in the back door, watching as my mother was preparing the evening meal, and as a rule she had a ribbon taped to the kitchen cabinet. Sometimes it was yellow, sometimes blue and sometimes red. Mother would have been proud of whatever color her iris had earned that year.

If Mother spent a lot of time working with her plants I don't remember it, but then I wasn't really "into" gardening at that point in my life. There were races to be run, baseballs to fielded, boys to be discussed, all the happenings in my life to be dwelt upon. Not a lot of time to think about how my mother had won her ribbons. Gardening was for older women at that point.... I just didn't go there! But to this day, when I hear the phrase Grapevine Garden Club, I am immediately transported back to my mother's iris bed and the ladies of the Grapevine Garden Club. Those ladies are an endearing memory of a slower, simpler life here in Grapevine and the beginnings of my lifelong love of the beauty that exists here on this earth. I tip my hat and take off my grimy gloves in respect and love for all of those ladies who planted the gardening seed in my life.

FEBRUARY 2010

A TIME TO PRUNE

- by Toni Moorehead, Master Gardener

To prune, or not to prune...that is the question. And the answer is...YES! Generally speaking, mid-February is the ideal time for pruning *most* shrubs, perennials, and ornamental grasses; but some plants are pruned later in the spring. So before you go Edward Scissorhands on your landscape, let's go over some specifics.

The reason mid-February is the best time for major pruning is because usually our last freeze comes around mid-March (March 17). Three to four weeks prior to that time is the best time for pruning. Your plants have been storing energy all winter long. Pruning will stimulate new growth, so by the time the new growth comes, chances are the deep freezes will be a distant memory. Prune too early, and new growth could get burned by a late freeze.

Late winter (January/February) is also a good time to prune trees, if needed. Just a note about oak trees (live oak or red oak). Trim them very soon, if needed. To prevent the spread of oak wilt disease, the best time to prune oaks is in the winter months, preferably before February 15. The nitidulid beetle is not as active during colder months.

In the case of shrubs, try not to just shear them, but instead selectively prune at intersecting branches toward the interior of the shrub to keep shrubs full and compact. If you only shear the tops of the shrubs, that is where the new growth will come, leaving the interior and lower branches bare.

Here are some tips on pruning specific types of shrubs, ornamental grasses, and roses:

Hollies (e.g., Yaupon, Burford) can take pretty drastic pruning, so don't be afraid to prune as needed. I literally prune my hollies down to sticks every February and within a month, they are lush with new growth. One note on Dwarf Yaupon Hollies, when pruning this shrub, aim for a dome shape instead of a "meatball." Shape the top of the shrub, if needed, but do not cut in at the bottom.

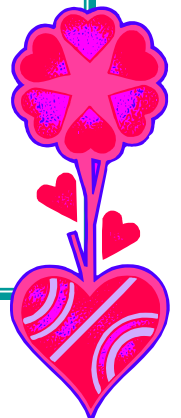
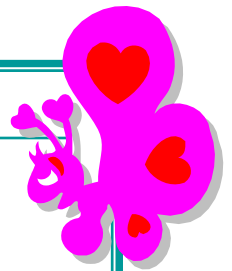


Dome shaped



"Meatball"

(Continued)



FEBRUARY 2010

A TIME TO PRUNE, cont.

Now let me get on my soapbox for a moment: All varieties of Nandinas are always pruned at the bottom. Never prune the sides or tops. Take the tallest canes, follow them down to the ground, and prune them. New growth will come out at the point of pruning, keeping the plant full and compact. Try not to prune more than one-third of the shrub at once. I am on a mission to rid the world of Nandina No-Nos! Now that you know how to properly prune a Nandina, please tell someone else. Spread the word! I guarantee you have at least one neighbor who needs this information.



Improperly pruned Nandina



Properly pruned Nandina (11 yr old)

Abelia: Prune longest stems close to the ground. Prune selectively. Please do not shear this shrub. It has a naturally weeping shape and does not look good when it is pruned into a square or ball.

Ornamental Grasses: Cut Miscanthus and Fountain grasses down to about three to six inches. It is not necessary to cut Mexican Feathergrass; just give it a "haircut" and rake out the old grass stems. Cut Muhly grasses down to about a foot tall and rake out old stems.

Miscanthus Sinensis 'Adagio'



Roses: Prune shrub roses back by about half their size in mid-February. Follow the stem down until you find a leaf node (bud of new growth) pointing in the direction you want the stem to grow and prune it at a 45-degree angle right above the leaf node. You want the leaf nodes to be pointing to the outside of the rose, not back toward the center. Prune out all dead wood and any stems pointing toward the center of the rose.

Prune climbing roses selectively, just pruning stems that have gotten out of hand, just tidy it up a bit. Prune spring bloomers AFTER they bloom. For information on the best roses for our area, visit this website: <http://earthkindroses.tamu.edu/>

Now, take a breath and step away from the pruners! As I mentioned before, some plants are pruned later in the spring. Spring-blooming shrubs produce flower buds for the spring during the *previous* autumn, so you will need to wait until *after* you enjoy the spring blooms to do any pruning. If you prune in February, you will cut off all the blooms. Indian Hawthorn, Viburnum, Forsythia, Flowering Quince, Loropetalum, and Azalea fall into this category. They will be ready for pruning probably about April.



Prune above leaf node, pointing outward.

(Continued)



A TIME TO PRUNE, cont.

Hydrangeas bloom on old growth (last year's growth), so pruning them now will sacrifice blooms. If you need to prune them, do so right after they finish blooming. Selectively prune by cutting the tallest stems close to the ground.

Spiraeas: Prune Bridal Wreath Spiraea *after* it blooms, cutting tallest stems close to ground only if needed. It does not need to be pruned at all; it has a lovely weeping shape. Anthony Waterer Spiraea and Lime Mound Spiraea, however, can be pruned in mid-February; prune back by about half to keep more full and compact.

Crape Myrtles: (Excuse me while I get back on my soapbox again).... NEVER, NEVER, NEVER prune the tops of crape myrtles – PLEASE don't commit "Crape Murder."

Prune only dead or crossing branches and any suckers that have grown at the bottom. If your crape myrtle did not leaf out well last year because of LAST winter's freeze damage, cut the tree **TO THE GROUND** and let it regrow. It will quickly send up new shoots, and at that point you can pick the strongest stems to become the new tree.



Crape "Murder"

Now for my favorite subject.....Perennials: The following are just a few specifics on pruning your perennials to get them ready for spring.

- Salvia Greggii – cut down to about 6 to 12 inches. It will stay more compact/full.
- Shrubby Pink Skullcap, Blackfoot Daisy, Calylophus – just give it a haircut, taking off only a couple inches to make it look neater.
- Purple Coneflower, Black-Eyed Susans, Fall Aster, Mealycup Sage, Mexican Mint Marigold, Russian Sage, Hardy Hibiscus, Mexican Bush Sage, Summer Phlox, Turk's Cap, Loosestrife, Zexmenia, Catmint – cut to the ground.
- Lantana – Cut back to about 3 to 6 inches. It is slow to come out in the spring, so don't give up on it.
- Creeping Phlox, Dianthus - no pruning necessary.
- Four-Nerve Daisy - no pruning necessary; just cut away old blooms.
- Liriope (variegated or green "monkey grass") – cut back to about 1-2 inches.
- Butterfly Bush (Buddleia) and American Beautyberry - Cut back to about 12 to 18 inches.
- 'Powis Castle' Artemisia – cut back to about 6 inches.
- 'Katie's' Ruellia (Dwarf Mexican Petunia) – cut to ground.
- Ferns – Wood Ferns and Japanese Painted Ferns - cut to the ground. Evergreen Holly Ferns and Autumn Ferns – cut only browned foliage.
- Cast Iron Plant – cut tattered or browned leaves to the ground. It is slow to grow back; be patient.
- Ligularia (Leopard Plant), Lamb's Ear - cut away any browned leaves.
- Columbine - only cut away dry, browned foliage. It should be sending up new growth right now; be careful not to cut new foliage.

For additional pruning information, including proper technique, check out <http://aggie-horticulture.tamu.edu/extension/pruning/pruning.html>.

There you have it. Grab those pruners and get busy. As an added bonus, did you know that most gardening activities burn about 300 calories per hour? Now you can work off all of those holiday goodies and get ready for all of the spring treats in your garden!

Remember...a day without dirt under your nails is like a day without sunshine. Happy Gardening!

See the January 2010 GGC newsletter to view pictures of the various varieties of caladiums.

GGC Members Caladium Bulb Order Form for 2010

It's time to order Caladium Bulbs for your spring planting and summer color. These will be #1 size, healthy and a good buy for our gardening friends! The orders this year will be \$0.50 per bulb, with a minimum purchase of 10 bulbs. Contact Val Reed for additional information.

Please make your check out to Grapevine Garden Club. Turn in this completed order form at the GGC meeting with payment attached, no later than **February 26, 2010**.

Or mail to: Grapevine Garden Club, P.O. Box 811 Grapevine TX, 76099-0811.

Bulbs will be available for pick-up at the later part of March.

NAME _____

PHONE _____

CLUB NAME Grapevine Garden Club

Total # of bulbs (10 bulbs minimum) _____

@ \$0.50 each = _____

Check enclosed for \$ _____

SELECTION (10 bulbs minimum, ea variety selected)

Candidum (White with green veins, Shade, Tall) Quantity _____

Freida Hemple (Bright red center & veins, med.
green margins, Partial Shade, Medium) Quantity _____

Tom Tom (Dark rose-red blotches and deep red
central veins, med green margin, Partial Sun, Short) Quantity _____

Carolyn Whorton (Large pink blotches, dark
veins, green mottling, Full Sun, Tall) Quantity _____

Aaron (Large white center with narrow green,
margin, Full Sun, Tall) Quantity _____

Kathleen (Light Salmon pink center with green
border, Shade, Medium) Quantity _____

Note: You may select a different variety of caladiums, from the full brochure, other than the above listed types - But please order a case (200 bulbs), or a half case (100 bulbs).

Also note: If you order Strap /Lance Leaved or Dwarf Leaved the price is \$0.75 per bulb.

FEBRUARY 2010

CALLING ALL DOCENTS

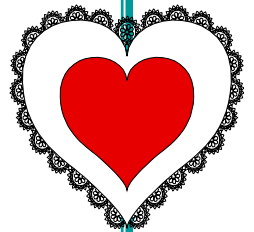


Several exciting opportunities for docents lie ahead. In addition to the scheduled events listed below, a celebration honoring National Public Gardens Day on May 7 is in the formative stage. Events will include on-site landscape artists, an art exhibit, hourly gardening seminars at the Pewitt Pavilion, and docent tours. Details will be published in the April GGC newsletter. Please forward all suggestions to Lisa Grove (Yearbook page A-17).

In preparation, a docent training/refresher workshop is scheduled for **March 9 from 10:00 A.M. to noon** at the Grapevine Botanical Gardens' Bessie Mitchell House. All current docents and those interested in becoming docents are encouraged to attend. Please RSVP to Lisa or Shari Stanfield (Yearbook page A-51). This is a terrific opportunity to share your love of gardening.

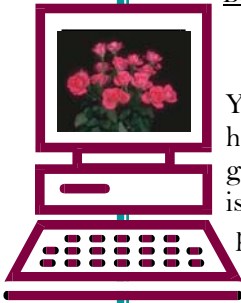
Grapevine Botanical Gardens Docent Tour Opportunities

Date	Activity	Time
Monday, March 22, 2010	Girl Scouts of America (Daisy Scouts, 6 yrs old and younger). Approx. 10 children	4:15 - 5:15 P.M.
Thursday, April 15, 2010	Waverly Park Garden Club. Approx. 40 adults	To be announced
Saturday, April 24, 2010	Custom Holiday Tour. Approx. 50 adults	9:30 - 10:30 A.M.



Beginning soon

THAR'S GOLD IN THEM THAR WEB HILLS !



You may never venture into the wild of the Internet looking for garden info, or you may have many go-to sites for all things growing and beautiful. While there are great many gardening-themed websites, some dedicated particularly to the Texas gardener, the internet is also clogged with blogs that offer specialties in everything from growing vegetables, planting tips, gardening advice, photographing plants, to just enjoyable reading. If you don't already travel the web, we want to give you a reason to go find that gold, and if you already make the journey, we'd love to have the web locations you actually use so we can all share in your knowledge.

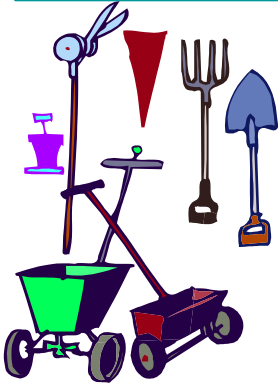
We are compiling a list of member-recommended websites, and we plan to feature them in this newsletter, starting in March. Please e-mail the web addresses or website titles to Kathy Dohrer (Yearbook page A-15).

We are eager to hear from you about your favorite gardening websites!

Just to whet your brain, we have a treat for you. Several homely and utterly mesmerizing videos can be found on YouTube of Ruth Stout (1884-1980), a lifelong Connecticut gardener whose refreshing common sense approach to gardening and life is charming. She wrote several books, long out of print, one in 1961 called *Gardening Without Work: For the Aging, the Busy, & the Indolent*. Watch all three of Ruth's videos. The third wonderful video is her take on life – highly recommended. Here's the web address: <http://www.youtube.com/watch?v=A9ReIotPNVM>. Or, simply Google "Ruth Stout video" to find the link.

FEBRUARY 2010

WEST TEXAS STREET WORK DAY IS TUESDAY, FEBRUARY 16TH AT 10 A.M.



The following people have signed up to work on West Texas Street on Tuesday, February 16 at 10:00 A.M.

Barbara Atkins

Paul Ernst

Pat Mingus

Bev Bravo

Peggy Harris

Eloise Myers

Dave Buhr

Rene Herndon

Lindle O'Neil

Kathy Clark

Denise Hines

Angela Ozymy

Sarah Erickson

Joan Kowalski

Pauline Robbins

Carolyn Ernst

Lynn Kugler

Barbara Thompson

Lonna Tweedy

Bring pruning shears, loppers, gloves, a tool to dig weeds with, and something to drink. Dress for the weather.

Make note of my cell phone number in case you need to call me. (Yearbook page A-18.)

We have some new folks joining us, so if any of you need directions, here's where you need to go: West Texas Street is a cul-de-sac on the west side of Church Street, which is two blocks west of Main Street in downtown Grapevine.

If you have any questions, call me.

Suzi Guckel, Chairman
West Texas Street Project



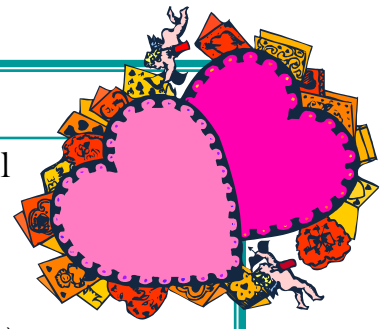
YOU MIGHT BE A GARDENER IF...

- You get a load of manure for a special occasion.
- Horticulturalists say "soil." Gardeners say "dirt."
- Gardeners can have as many wind chimes as they can afford.

- Felder Rushing

FEBRUARY 2010

BY POPULAR REQUEST - From the January GGC general meeting hostess table



Tortilla Roll-Ups

10 large flour tortillas
3 8 oz. pkgs cream cheese
1 3.8 oz. can black olives, minced

2 4 oz. cans green chilies
2 cups grated cheddar cheese (8 oz. pkg)
3-4 green onions, minced

Mix ingredients and let sit a few hours for flavors to mingle. Spread thinly on each tortilla and roll-up. (You can use a little sour cream to thin mixture, if necessary.) Let rolls sit in the refrigerator wrapped tightly in plastic wrap for a few hours or overnight. Slice rolls when ready to serve. Makes a bunch! - Linda Harris

Mocha Nut Balls

Prep: 20 min. Bake 15 min. Yield 4-1/2 Dozen

1 cup butter, softened
1/2 cup sugar
2 tsp. vanilla extract
1-3/4 cups all-purpose flour

1/3 cup baking cocoa
1 Tbsp. instant coffee granules
1 cup finely chopped pecans or walnuts
Confectioner's sugar



In a large bowl, cream butter and sugar until light and fluffy. Beat in vanilla. Combine the flour, cocoa and coffee granules; gradually add to creamed mixture and mix well. Stir in pecans. Roll into 1-in. balls. Place 2 in. apart on ungreased baking sheets.

Bake at 325°F for 14 -16 minutes or until firm. Cool on pans for 1-2 minutes before removing to wire racks. Roll warm cookies in confectioner's sugar.

Taste of Home, Dec - Jan 2009. Janet Sullivan, Buffalo, NY.

Lemon Lover's Cookies

3/4 cup butter, softened
3 Tbsp. sugar
2 tsp. lemon juice
1 1/4 cups all-purpose flour
1/2 cup cornstarch
1 tsp. grated lemon peel

LEMON FROSTING

1/4 cup butter, softened
1 cup confectioner's sugar
2 tsp. lemon juice
1 tsp. grated lemon peel



In a small bowl, cream butter and sugar until light and fluffy. Beat in lemon juice. Combine the flour, cornstarch, and lemon peel. Gradually add to creamed mixture and mix well.

Shape into a 1-1/2 in. roll; wrap in plastic wrap. Refrigerate for 1 hour or until firm. Unwrap and cut into 1/4-in. slices. Place 2 in. apart on ungreased baking sheets.

Bake at 350°F for 8 - 10 minutes or until edges are golden brown. Cool completely on pans set on wire racks. (This did not work for me. When completely cool, cookies would break when removing. Did better when still warm.)

In a small bowl, beat butter until fluffy. Add the confectioners' sugar, lemon juice and peel; beat until smooth. Spread over cooled cookies; sprinkle with additional lemon peel if desired. Let stand until set. Store in an airtight container.

Taste of Home, Dec - Jan 2009. Virginia Dillard, Whitmire, SC.

WWW.GRAPEVINEGARDENCLUB.COM

