



THROUGH THE GRAPEVINE

GARDEN CLUB of the YEAR

April 23, 2013

Stacy's Furniture & Accessories
Community Room, 3rd Floor 1900 South Main, Grapevine
Social 9:30 A.M. Meeting and Program 10:00 A.M.
We thank our members for continuing to carpool and to park in the outer slots
to allow Stacy's customers to park near the store entrance.

THANK YOU TO OUR HOSTESSES:

Chair, Carmen Drew: Lyn Argenbright, Barbara Munn, Colleen Connor, Sharon Beach, Jo Ogletree, Judy Ullman, Miriam Ward, and Evelyn Urbanosky

Grapevine Garden Club April Program

At our April general meeting, Sharon Duquemin, will explain to us the process and principles of landscape design, something we all struggle to learn more about.

✂Elayne Vick



landscape design process

In this issue—	page
♥ April Program	1
♥ President's Message	2
♥ Calendar of Events	2
♥ Birthdays	3
♥ New Members	3
♥ Save the Dates!	3
♥ Dues	4
♥ Hostess Opportunities	4
♥ Decent Opportunities	4
♥ Flowercade	5
♥ Plant Sale	5-6
♥ Main Street Days	7
♥ Spring Luncheon	7
♥ National Public Gardens Day	9
♥ Gardeners on the Go	9
♥ GGC History Book—Update	10
♥ Container Gardening Workshop	11
♥ Colleyville Garden Club Tour	12
♥ NGC President Profile	13
♥ Greenhouse Pledge/ Contribution form	15

President's Message

During the last GGC general meeting program we learned some interesting information about the color spectrum that various insects “see” in our gardens to attract them to sources of nectar and pollen. Combined with the color palette information that was shared in our February program, we have many more options to consider when planning new planting combinations for our gardens. And stay tuned for more information during the April general meeting program about landscape design. Armed with all these wonderful ideas, you will be able to make a better assessment of changes to make to your landscape. I hope you have enjoyed this year of terrific program speakers and workshops!

There are people who would debate with me, but I think spring is the best time of year for a gardener! Each new day arrives with another plant popping up, another butterfly floating by or another bird looking for a nesting spot. And for GGC it means Flowercade, Arbor Day, Redbud Trees for 3rd graders, annual scholarship recipient selections and of course the **BIG EVENT** – the annual spring plant sale. The plant sale diggers have been very busy and like Santa’s little elves will have lots of treats for all those avid gardeners who wait with anticipation for sale day. So make some space in your garden and come shop on April 20th at the Botanical Gardens.

☞Karen Rice, President

CALENDAR OF EVENTS

Date	Event	Location
April 9 th	West Texas Street Work Day 9:00 A.M.	West Texas Street Grapevine, Texas
April 12 th	Flowercade Prep Day	Joan Stewart's Greenhouse
April 13 – 14	Flowercade	Fort Worth Botanic Gardens
April 17 th	Fort Worth Garden Club Council Regular Meeting	Fort Worth Botanic Gardens
April 20 th	Spring Plant Sale 8:00 A.M. – 1:00 P.M.	Grapevine Botanical Gardens
April 22 – 24	Spring State Convention	College Station, Texas
May 3 rd	Redbud Tree Program	Grapevine Colleyville ISD
May 5 th	Promenade Garden Tour	Colleyville Garden Club See announcement in this issue.
May 10 th	National Public Gardens Day	See related article in this issue.

April Birthdays

Sharon Beach
Kris Botterman
Carolyn Chance
Minnie Hall
Marilyn Johnson
Linda Krimm
Virginia Lawrence
Margaret Meharg
Cindy Miller



Pat Mingus
Kevin Mitchell
Barbara Morrell
Barb Nunn
Barbara Oldani
Beverly Ryan
Kimberly Singel
Alexandra Taylor
Judy Ullman
Shane Wilbanks

April Birth Flower
daisy



Tiger swallowtail on Flowering Quince

Welcome New Members
Debbie Boyle
Susie Emmons
Emily Galpin
Carolina Nessi-Asplund

Save the Dates!

Date	Event	Location
May 17 – 19, 2013	Main Street Days	Downtown Grapevine
May 21, 2013	Spring Luncheon: <i>Come Grow with Us</i>	Trawick Pavilion at Grapevine Lake
June 2 – 8, 2013	National Garden Week	
June 5, 2013	Gardeners on the Go	Edom and Chandler, TX

Dues are DUE

Pay your dues at the April meeting, at the Spring Luncheon or mail them to Grapevine Garden Club, P.O. Box 811, Grapevine, TX 76099. Individual dues are \$30.00 and family dues are \$35.

With Appreciation to Our Hostesses...

Wow, what a marvelous year we have had so far. Special thanks to the chair persons and hostesses for such a wonderful job providing a warm greeting and wonderful food at our meetings. This is the time of year when you, as members, have the opportunity to volunteer for this committee. It is a great way to make friends, share your recipes, and serve the club. Sign up sheets and information will be available at the April meeting, as well as at the May luncheon. If you have any questions regarding the duties, or are unable to sign up at one of these times, please feel free to contact me at any time.

Debbie Smith
Hostess Coordinator

Docent Opportunities for April: Kindergarteners are Coming!

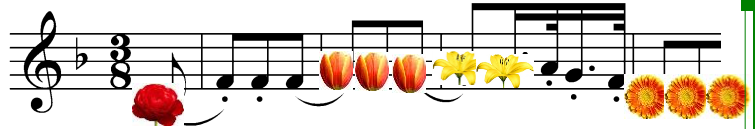
There are two fun Garden Docent opportunities coming up at the end of this month. The first one is on Wednesday, April 24th from 9:00 to 11:00. Sixty kindergarteners are coming to the Grapevine Botanical Gardens for insect activities and a garden tour.



The other opportunity is on Friday, April 26th from 9:30 to 11:30. We will have one hundred kindergarteners on that day for insect activities and a garden tour. That is a lot of excited five and six year olds! Please come join us on those days for two fun and rewarding hours. An email will be coming your way this week, and there will be sign up sheets at the next meeting.

Paula Wilson
Docent Coordinator

Flowercade *A Floral Symphony*



Have you ever wondered about Flowercade? What is Flowercade? What happens with my horticultural specimens after I submit them?

Join us in a familiarization tour of Flowercade on Saturday, April 13th at the Fort Worth Botanic Garden (FWBG). Meet in front of the Deborah Moncrief Garden Center located at the FWBG main entrance at 2:00 P.M. and we will tour the displays with a knowledgeable docent. Our docent will explain about flower show judging and what makes a good entry. You will get to see beautiful horticultural specimens as well as creative entries in the design classes. The Fort Worth Rose Society and the Fort Worth Iris Society are having their flower shows on Saturday, too, and there will also be garden related merchandise for sale. If you would like to have lunch first, meet at the Rail Head BBQ located near the Botanical Garden at 2900 Montgomery St. at 1:00 P.M. Organize a group of friends and come find out what Flowercade is all about! For further information, contact Karen Rice.

 Karen Rice

Digging, Dividing and Potting—Preparing for the Spring Plant Sale



Greg Braak



*Plant Digging Party at the Guckel Gardens
Susan Stanek, Pam Braak, Karen Rice, Chuck
Voelker, Paula Wilson
(Peggy Harris in background)*

Spring Plant Sale

The GGC Annual Spring Plant sale will be held April 20th at the Grapevine Botanical Gardens from 8:00 A.M. to 1:00 P.M. Here are a few things to keep in mind as you prepare for this special day.

1. All GGC members will receive a 10% discount on all plant purchases, starting at 8:00 A.M. There are no “before” or “after” sale events.
2. If you have plants to drop off for the sale, bring them to the sale location Wednesday afternoon. I will contact each of the members who had plant digs to arrange a pickup time for plants at their homes. If anyone else needs a pickup, call or send me a note.
3. All sale volunteers will be contacted by a sale coordinator to confirm volunteer times and responsibilities.
4. Pass the word along to your friends and neighbors about the advantages of this sale. (Proceeds stay in the community and fund scholarships and civic projects—sort of a community green event.)
5. The ‘Diggers’ (digging party enthusiasts) have potted up over 1000 plants for you to choose from, and there will also be commercial annuals and perennials available to fill out your plant needs. There will a final plant inventory sent out to all GGC member prior to the sale, so you can plan your garden and landscape purchases. If you wanted some caladiums and did not preorder, they will also be at the sale, ready for a home in your garden. There are some of all varieties that were ordered.



Plant Sale 2012

 **Chuck Voelker**



TOM TOM CALADIUM

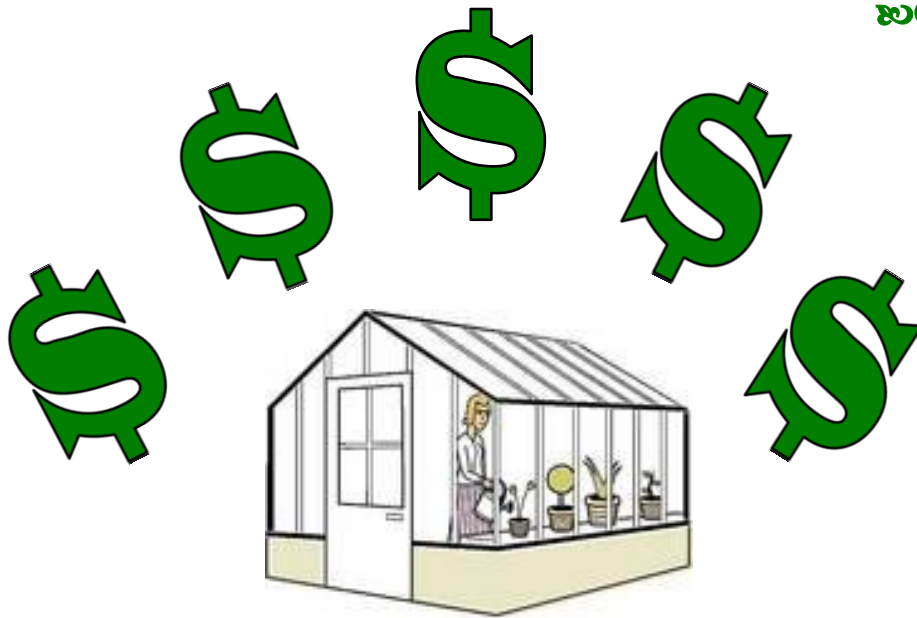


CANDIDUM CALADIUM

Main Street Days—A GGC Fund-Raising Opportunity

Help raise money for the greenhouse project! We have committed to "man" three gates at Main Street Days. Shifts range from two hours to two and a half hour slots. Check your calendars for May 17 – 19, 2013. Sign up at the April meeting. Contact Gloria Land with your availability or any questions. Thanks in advance from the Greenhouse Committee!!

✂Gloria Land



Come Grow with Us – Spring Membership Luncheon

Tuesday, May 21 – 10:30 A.M. – 12:30 P.M.

Trawick Pavilion at Grapevine Lake

RSVP, yes only – Edie Williams by May 15

*Out of the Garden and Into the Kitchen or
Shop for a Yummy Salad/Dessert*



Karen Rice, Valerie Reed

Are you one of those members who are rushed for time and not overly fond of cooking? There is no shame in providing a store bought salad or dessert for the May 21st luncheon! But if you have perused the *Out of the Garden and Into the Kitchen, Great Recipes from the Members of the Grapevine Garden Club, Inc.* available on the club's website under publications, you know that many members not only enjoy preparing culinary delights but also consider presentation important.



Scanning photos from last year's luncheon, Peggy Harris' Rainbow Layered Jell-O™ was a visual knock-out! After reading the recipe, I have to admit I probably don't have the patience to create this Jell-O™ wonder. However, the daylily garnishing Peggy's Jell-O™ may inspire even us lazy cooks to enhance our store bought food with edible flowers.

Can we adjust our attitude and think of the daylily as a lovely, perennial vegetable and find a sunny spot in the garden for it? While living in Connecticut, I was always amazed at the daylilies blooming wild along the roadsides. It wasn't unusual to see a car stopped and the daylilies being harvested. A friend informed me that the flower-pods are best when collected as they begin to open for a sweet and crisp texture when sautéed in butter, but there are many ways to enjoy daylilies in soups, meat dishes, and salads. All parts of the daylily plant are edible. Allergies to almost all foods are ultimately possible. It is recommended that when trying new foods to limit your intake to be certain that you do not have a negative reaction.

Another photo that caught my attention from last year's luncheon was what appears to be lemon bars topped by sugared pansies obviously making the garnishment sweet enough to eat. Unfortunately, this recipe does not appear in the 2012 edition of *Out of the Garden and Into the Kitchen*. (Maybe the mystery member will submit the recipe this year.)



This is a reminder! Be sure to either bring a copy of your recipe to the luncheon or submit it to Barbara Atkins by email. In fact, recipes enjoyed at any garden club meeting or event may be submitted for inclusion in the GGC recipe collection.

Luncheon sign-up sheets will be available at the April general meeting. Or, you may email/phone Edie Williams by May 15 with your RSVP with what you are bringing, either salad or dessert. Members may invite a guest. Their name should be listed with your RSVP. Time to Party!

✂Valerie Reed
Spring Luncheon Coordinator

National Public Garden Day

Friday, May 10, 2013

10:00 A.M. to 6:00 P.M.

Botanical Gardens at Heritage Park



Join us as we celebrate the role public gardens play in the community. These gardens are a source of education and information on stewardship of our natural resources. Enjoy activities, seminars, and hands on workshops as well as light refreshments in the beauty of the garden!

✂ Lisa Groves
Grapevine Botanical
Gardens Horticulturalist

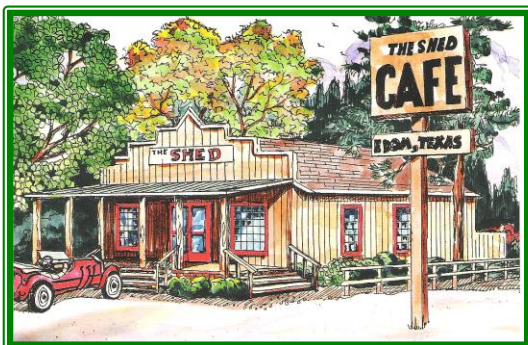
Gardeners on the Go

National Garden Club Week Tour

Wednesday, June 5, 7:50 A.M. - 3:45 P.M.

Destination: Edom and Chandler, Texas

Blueberry Hill Farms – This is your chance to participate in *U-Pick Blueberries* at Blueberry Hill Farms, so bring a cooler to transport the berries home. The Country Store and Bakery has blueberry pies, muffins, yogurt, preserves and fresh blueberries.



Shed Café – *Get Fed at the Shed* or shop at this tiny artists' enclave in Edom. The Shed is a simple country café serving huge lunches with specialties including chicken fried steaks, catfish and enormous coconut, banana cream and chocolate pies.

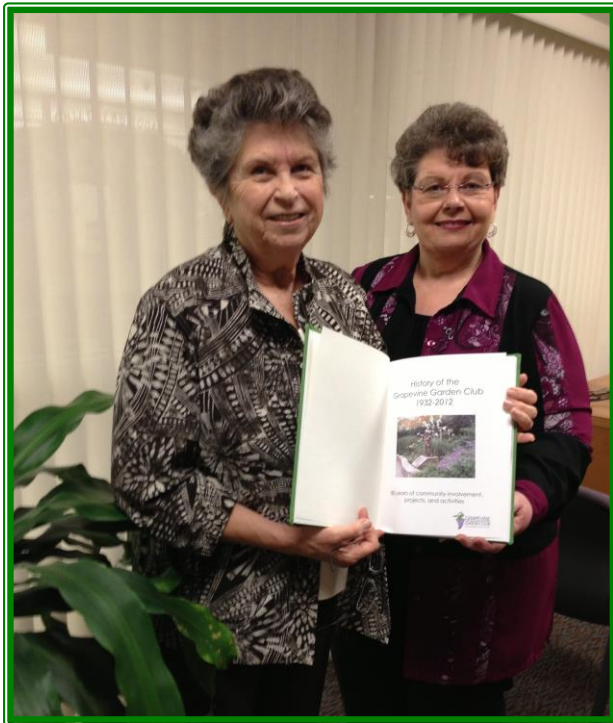
Blue Moon Gardens - Located on six acres in a beautiful wooded area of East Texas, Blue Moon Gardens has numerous display gardens to show how their herbs, perennials and shrubs really grow. A wide selection of herbs and shade-loving perennials and a large variety of sun-loving natives and perennials are available. The gift shop is located in a 90-year-old farmhouse. We will be attending a program on harvesting and preserving herbs.



While it seems very early to be considering a June tour, the April general meeting is the last normal meeting of the year. More information about the June tour will be forthcoming in the May newsletter.

Joetta King
Gardeners on the Go

GGC History



Hardbound editions of the *History of the Grapevine Garden Club 1932-2012* will soon be available in the circulating and genealogy sections of the Grapevine Library.

Author, Joetta King
Librarian, Janis Roberson
Photographer, Elayne Vick

Container Gardening Workshop

March 26, 2013



Colleyville Garden Club presents its 20th
Promenade Garden Tour 2013

Sunday, May 5, 2013
11:00 am - 4:00 pm

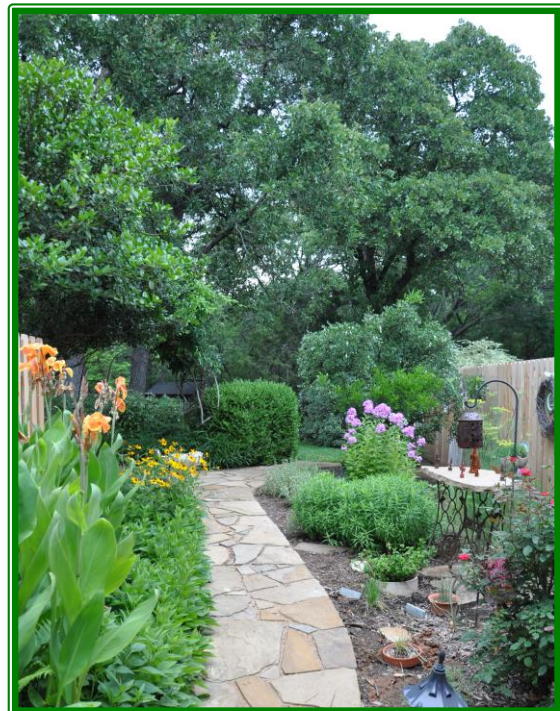
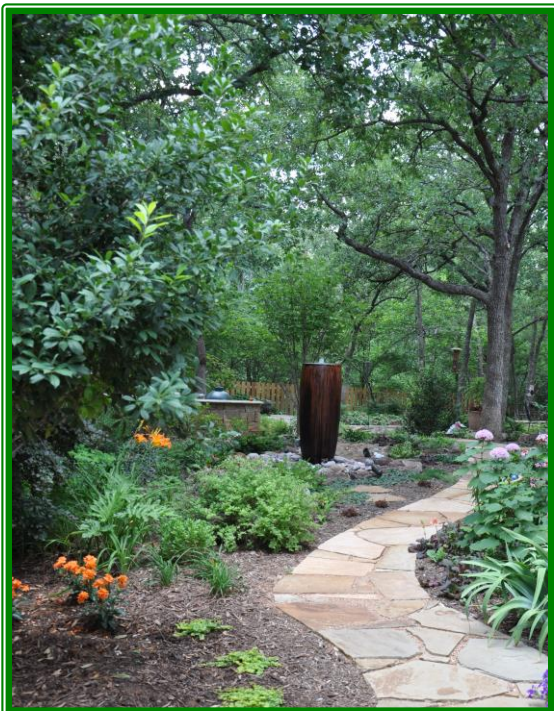
Tickets are \$12 in advance; \$15 day of Tour
For more details on ticket outlets, etc. please visit our website:
www.colleyvillegardenclub.org
Or contact Susan Taylor at colleyvillegardenclub@gmail.com.

The Promenade Garden Tour features four beautiful Colleyville area gardens.
The gardens vary in size and style and feature water fountains, ponds and
outdoor living areas/kitchens with a variety of low water, drought tolerant
plantings for sun and shade.

There will be a plant sale, educational exhibits and a raffle.
Tarrant County Master Gardeners and Colleyville Garden Club members
will be on hand to answer questions.
Questions? Visit our website for more details www.colleyvillegardenclub.org

Or contact Susan Taylor at colleyvillegardenclub@gmail.com.

Images of Adele Claeson's Gardens





madame president

National Garden Clubs, Inc. President Shirley Nicolai talks NGC happenings and her own garden favorites with author and garden designer Suzy Bales

BY SUZY BALES

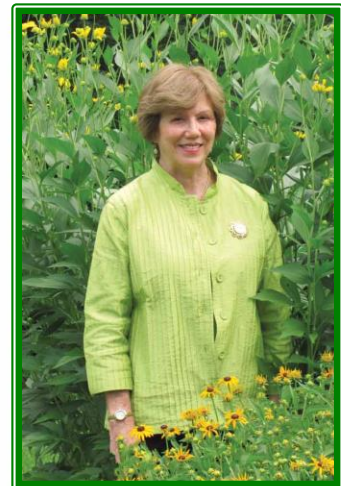
BIRTHED IN 1929, National Garden Clubs, Inc.'s impact goes far beyond beautifying members' yards and spreading a love of gardening. With nearly 200,000 members in more than 6,000 local clubs across America and 314 international affiliate groups, NGC is the largest volunteer organization of its kind. Its wide range of local, national, and international projects includes protecting aquatic ecosystems, promoting conservation, beautifying civic property, and reforesting and replanting after national disasters.

Shirley Snow Nicolai, a former schoolteacher and a mother of two, has been a member for 33 years. After holding leadership positions at the local and national level, she was elected NGC's 42nd president in 2011.

SUZY BALES: Shirley, can you tell us how you got started with gardening?

SHIRLEY SNOW NICOLAI: You might say I came by it naturally. My father was an accomplished gardener whose hobby was hybridizing rhododendrons, such as 'Snow's Red.'

What drew you to the National Garden Club? Once I had my own home I wanted to landscape it, and I realized there was a lot I didn't know about gardening. I joined a club to expand my knowledge. A mentor encouraged me to attend NGC schools. The classes were so interesting that over the years I earned Master status in Landscape Design School, Gardening Study School, Environmental Studies School, and Flower Show School, making me a Five Star NGC member.



ABOVE: National Garden Clubs, Inc. President Shirley Snow Nicolai surrounded by brown-eyed susans in the garden at the NGC national headquarters in St. Louis, Missouri

TOP PHOTO BY HUGH SCHOELZEL; BOTTOM: PHOTO BY MICHELLE SMITH, COURTESY OF NATIONAL GARDEN CLUBS, INC.

SPRING 2013 | 103

profile in petals



A real learning experience! Can you tell us a little bit about the actual classes? NGC schools are located all across the country. Flower Show School instructors are members with Flower Show Judge status that are trained to teach. Landscape architects and designers, extension service instructors, and other qualified professionals teach the remaining NGC schools for landscape design and gardening and environmental studies.

What about your garden? Our three acres, in Maryland on the banks of the Potomac River, were an amusement park built in the 1880s and accessible by steamboat. On our front lawn is the original pond where the roller coaster ride ended, splashing its riders. Previous owners converted the dance pavilion into a home. Over the years, because gardening is so enticing, our lawn continues to shrink as we plant more trees and expand our mixed perennial bed, shrub border, and vegetable garden.

Is there a profile of a typical NGC member? Our members come from all walks of life. Some join with pertinent knowledge to share; many are complete novices. Younger members with careers and family obligations tend to prefer short evening meetings to gain practical information to fulfill a personal need. With so many people of both sexes now having full-time careers, recent retirees find membership a rewarding way to learn, help, and make new friends in their communities. The number of men in our membership is growing all the time.

What are some of the club's activities? We like to say that we grow opportunities for making a difference. Our numerous projects reflect the interests of members and the needs of each club's community. We're known for beautifying civic areas, but in many parts of the country we landscape Habitat for Humanity houses, plant healing gardens to promote garden therapy, and plant pink



gardens to increase awareness of breast cancer.

We also partner with other national and international groups. For example, our Penny Pines Project works with the U.S. Forest Service to replant state and national forests. Providing potable water through a project in Haiti is another example.

The NGC sounds like a caring community with a mission to give back and educate. Do you have a favorite program? There are so many, it's hard to choose! To explain how diverse our programs are, I'll tell you about two of them. Our Smokey Bear & Woodsy Owl Poster Contest is for children in the first to fifth grades. Last year we had almost 22,000 entries. Their original drawings have to demonstrate their understanding of preventing forest fires or basic environmental conservation principles. The competition has been held for 50 years, and the grand-prize winner receives round-trip airfare and accommodations for four to visit Washington, D.C.

Another favorite is our Blue Star Memorial Program, which honors those in the armed forces. Currently we have about 4,000 markers placed across the country along highways and in national cemeteries, parks, and veterans' facilities.

What would you say is the secret of NGC's ongoing success? Individuals join our clubs to learn about flower arranging, landscaping, gardening, and other related topics, but they stay for the friendships and the difference we make. 🌸

To learn more about National Garden Clubs, Inc., visit www.gardenclub.org.

ABOVE LEFT: North Carolina's Granite Falls Garden Club planted this carpet of petunias as part of the NGC's Plant It Pink Program, which promotes breast cancer awareness through pink gardens across the country. **ABOVE:** One of Nicolai's favorite NGC programs is the Blue Star Memorial Program, which honors U.S. armed forces by placing markers across the country. This marker in Martinez, California, was donated by the Diablo Foothills District of California Garden Clubs, Inc.

LEFT: PHOTO COURTESY OF NATIONAL GARDEN CLUBS, INC.; RIGHT: PHOTO BY ROBERT H. NOTH, COURTESY OF NATIONAL GARDEN CLUBS, INC.



PLEDGE/CONTRIBUTE

I want to help build the Greenhouse at the Botanical Gardens at Heritage Park !

Recognition Levels:

\$500 and more	Name on a bronze plaque in the Gardens
\$1,000 and more	Plus name engraved in stone
\$5,000 and more	Plus acknowledged as major donor in Garden Club and City publications concerning the Greenhouse Project

Name _____

Address _____

Phone _____ Email _____

I would like to make a pledge of \$ _____ payable over:
_____ months OR

I would like to make a contribution of \$ _____

Signature _____

Date _____

Make checks payable to:

**Grapevine Garden Club
P.O. Box 811
Grapevine, TX 76092**